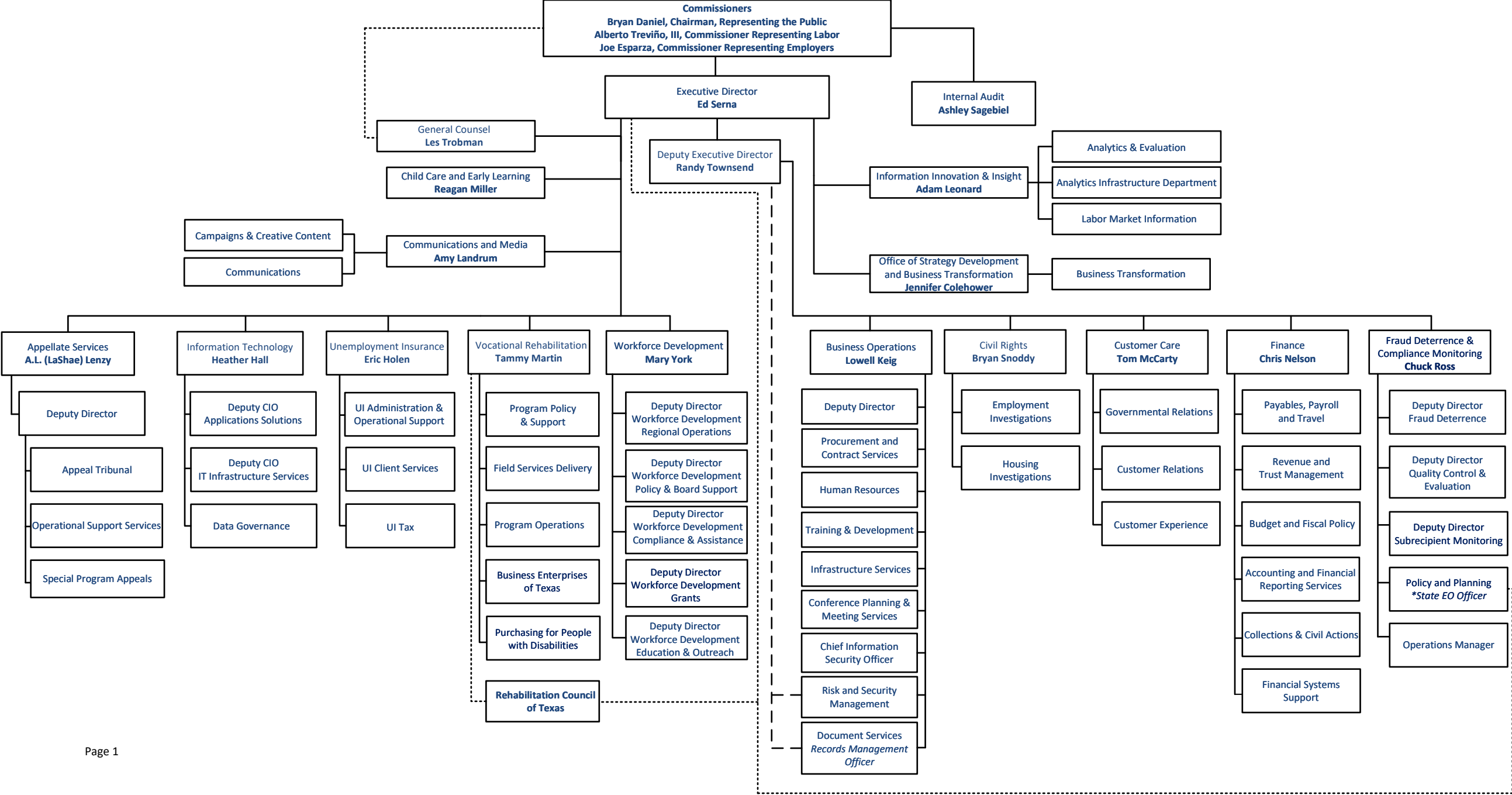


**TEXAS WORKFORCE COMMISSION**  
**January 2025**  
*Our mission is to promote and support an effective workforce system that offers employers, individuals and communities the opportunity to achieve and sustain economic prosperity.*

Accessible version available on page 2.



# TEXAS WORKFORCE COMMISSION ORGANIZATIONAL CHART

January 2025

*Our mission is to promote and support an effective workforce system that offers employers, individuals, and communities the opportunity to achieve and sustain economic prosperity.*

- I. Commissioners – Chairman, Representing the Public, Bryan Daniel; Commissioner Representing Labor, Alberto Treviño, III; Commissioner Representing Employers, Joe Esparza
  - A. Internal Audit, Ashley Sagebiel
  - B. Executive Director, Ed Serna
    - i. Deputy Executive Director, Randy Townsend
      1. Business Operations, Lowell Keig
        - a. Deputy Director
        - b. Procurement and Contract Services
        - c. Human Resources
        - d. Training and Development
        - e. Infrastructure Services
        - f. Conference Planning and Meeting Services
        - g. Chief Information Security Officer
        - h. Risk and Security Management (also indirectly reports to the Deputy Executive Director)
        - i. Document Services, Records Management Officer (also indirectly reports to the Deputy Executive Director)
      2. Civil Rights, Bryan Snoddy
        - a. Employment Investigations
        - b. Housing Investigations

3. Customer Care, Tom McCarty
  - a. Governmental Relations
  - b. Customer Relations
  - c. Customer Experience
4. Finance, Chris Nelson
  - a. Payables, Payroll and Travel
  - b. Revenue and Trust Management
  - c. Budget and Fiscal Policy
  - d. Accounting and Financial Reporting Services
  - e. Collections and Civil Actions
  - f. Financial Systems Support
5. Fraud Deterrence and Compliance Monitoring, Chuck Ross
  - a. Deputy Director, Fraud Deterrence
  - b. Deputy Director, Quality Control and Evaluation
  - c. Deputy Director, Subrecipient Monitoring
  - d. Policy and Planning, \*State EO Officer (also indirectly reports to the Executive Director)
  - e. Operations Manager
- ii. General Counsel, Les Trobman (also indirectly reports to the Commissioners)
- iii. Child Care and Early Learning, Reagan Miller
- iv. Communications and Media, Amy Landrum
  1. Campaigns and Creative Content
  2. Communications

- v. Information Innovation & Insight, Adam Leonard
  - 1. Analytics & Evaluation
  - 2. Analytics Infrastructure Department
  - 3. Labor Market Information
- vi. Office of Strategy Development and Business Transformation, Jennifer Colehower
  - 1. Business Transformation
- vii. Appellate Services, A.L. (LaShae) Lenzy
  - 1. Deputy Director
    - a. Appeal Tribunal
    - b. Operational Support Services
    - c. Special Program Appeals
- viii. Information Technology (IT), Heather Hall
  - 1. Deputy CIO, Applications Solutions
  - 2. Deputy CIO, IT Infrastructure Services
  - 3. Data Governance
- ix. Unemployment Insurance, Eric Holen
  - 1. UI Administration and Operational Support
  - 2. UI Client Services
  - 3. UI Tax
- x. Vocational Rehabilitation, Tammy Martin
  - 1. Program Policy and Support
  - 2. Field Services Delivery
  - 3. Program Operations

4. Business Enterprises of Texas
  5. Purchasing for People with Disabilities
  6. Rehabilitation Council of Texas (also indirectly reports to the Executive Director)
- xi. Workforce Development, Mary York
1. Deputy Director, Workforce Development Regional Operations
  2. Deputy Director, Workforce Development Policy and Board Support
  3. Deputy Director, Workforce Development Compliance and Assistance
  4. Deputy Director, Workforce Development Grants
  5. Deputy Director, Workforce Development Education and Outreach